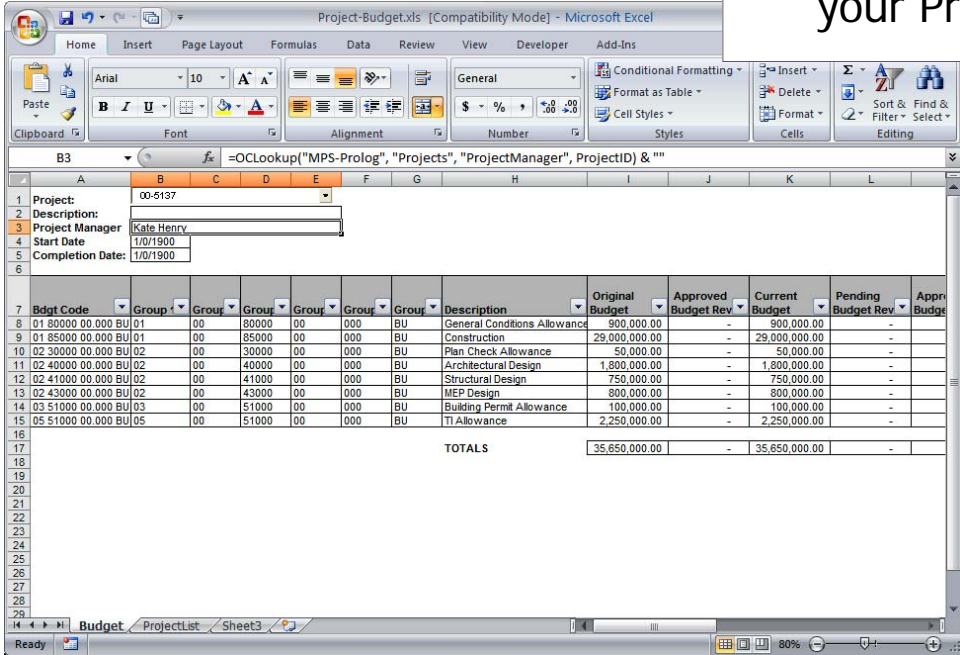


Bdgt Code	Division	CO	CSI Code	Category	Ext	Scope	Description	Original Budget	Approved Budget Revs	Current Budget
01 80000 00.000 BU 01	00	00	80000	00	000	BU	General Conditions Allowance	900,000.00	-	900,000.00
01 85000 00.000 BU 01	00	00	85000	00	000	BU	Construction	29,000,000.00	-	29,000,000.00
02 30000 00.000 BU 02	00	00	30000	00	000	BU	Plan Check Allowance	50,000.00	-	50,000.00
02 40000 00.000 BU 02	00	00	40000	00	000	BU	Architectural Design	1,800,000.00	-	1,800,000.00
02 41000 00.000 BU 02	00	00	41000	00	000	BU	Structural Design	750,000.00	-	750,000.00
02 43000 00.000 BU 02	00	00	43000	00	000	BU	MEP Design	800,000.00	-	800,000.00
03 51000 00.000 BU 03	00	00	51000	00	000	BU	Building Permit Allowance	100,000.00	-	100,000.00
05 51000 00.000 BU 05	00	00	51000	00	000	BU	TI Allowance	2,250,000.00	-	2,250,000.00
TOTALS								35,650,000.00	-	35,650,000.00



Superior Excel Integration for Meridian Prolog Manager

What if you could quickly produce the following results in Excel using your Prolog Manager data?



- ✓ Data Mining
- ✓ Interactive Analysis
- ✓ Business Intelligence
- ✓ Exception Reporting
- ✓ Multi-Project Reports
- ✓ Multi-Database Reports
- ✓ Powerful Graphing

Office Connector is an Excel Add-In that allows you to access your Prolog Manager data quickly and easily. The Add-In places new menu items and toolbar buttons in Excel as well as new worksheet functions that you can use inside Excel formulas.

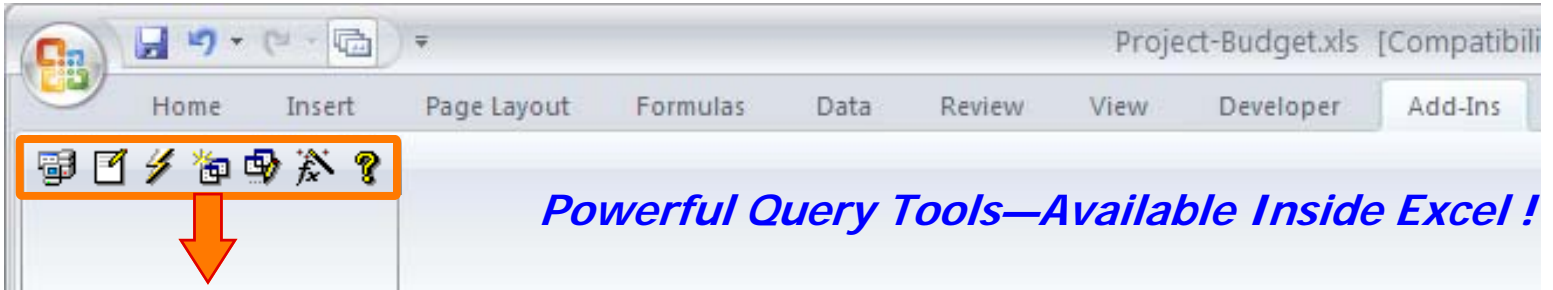
Office Connector allows you to embed dynamic queries that retrieve data from your Prolog Manager database into your Excel workbooks. Data can be refreshed at any time with the click of a button, or you can sever the link and create a static snapshot of the values that can be sent to other Excel users.

With Office Connector, you can seamlessly access your Prolog Manager data from Excel. Office Connector automatically creates connections to your database without the need for you to do any technical configuration.

Create concise and dynamic links to data in any field on any record in the Prolog Manager database using powerful Office Connector functions. With these functions, you can lookup field values from specific records, sum a given field in the database while applying criteria and much more!

Start developing entire spreadsheet solutions that work with your Prolog Manager data today!

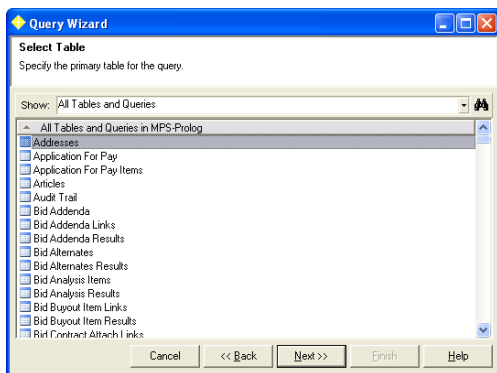
Office Connector Tools



	Select Databases	Displays a window allowing you to manage one or more connections to Prolog Manager databases that your Excel workbook will have access to.
	Save As Values	Allows you to store a copy of the workbook without any connectivity to your database. This allows you to distribute the workbook to people who don't have Office Connector or access to the data.
	Edit Preferences	Displays a window that allows you to set various settings that control the behavior of the application.
	Refresh Data	Refreshes the workbook with current database values. Formatting and layout will be preserved and only the data will change.
	Query Wizard	Displays a wizard that guides you through the steps of graphically defining a query that can get data from any table and column in your database and apply custom criteria. In addition, relationships between multiple tables are handled for you. Once the query has been defined, the data it returns will be displayed as a rectangular table of data in your Excel worksheet and can be refreshed when data changes.
	Edit Query	Allows an existing query to be modified after it has been inserted.
	Function Wizard	Displays a wizard that guides you through the steps of creating an Office Connector function. The following functions can be inserted into cells in your worksheet: OCFind - Uses conditions to locate a specific row in a table and then returns a column value OCLookup - Uses key values to locate a specific row in a table and then returns a column value OCSum - Returns the sum of a specific column in a table using rows that meet your conditions OCAvg - Calculates the average value of a specific column in a table using rows that meet your conditions OCMin - Determines the smallest value in a specific column in a table using rows that meet your conditions OCMax - Determines the largest value in a specific column in a table using rows that meet your conditions

Wizard Driven

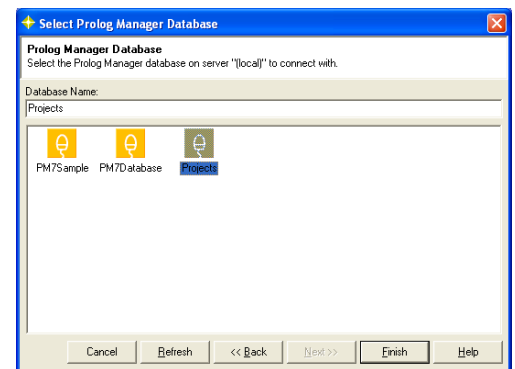
Office Connector's wizards make it easy accomplish the tasks you want.



to that

Easy Connectivity

Office Connector allows Excel to Connect with Prolog Manager data and without the need for you to setup ODBC data sources or define complicated queries!



System Requirements

Operating System: Microsoft Windows XP or 2003 | **Microsoft Excel:** Microsoft Excel XP, 2003 or 2007 | **Prolog Manager:** Prolog Manager 7x or 2007

Online Presentation

Contact us to attend a live online presentation and see how this Event 1 Office Connector can address your needs.