



EVENT 1 forecast™

"Forecast has really helped in our financial reporting process to get all the relevant information in front of the project managers for them to be able to predict the cost at completion. Getting that information to the PMs is important because they know much more about where a job will finish than anyone looking at reports in the finance department."

-- James N. Ritzema, Acoustics Inc.

Distributed Excel-based Forecasting for Timberline® Job Cost

What if you could accomplish forecasting in half the time with greater accuracy?

Cost Code	Description	Original Estimate	Approved Changes	Total Estimate	Committed	Actual Cost Uncommitted	Total Costs	Cost To Complete	Cost At Completion	Overf(Under)
GENERAL CONDITIONS										
1-040	Coordination	57,134.58	-	57,134.58	-	14,367.34	14,367.34	42,000.00	56,367.34	767.24
1-045	Insurance	5,050.00	-	5,050.00	-	4,895.00	4,895.00	1,000.00	5,895.00	(845.00)
1-065	Permits - General	20,239.00	-	20,239.00	-	20,239.00	20,239.00	-	20,239.00	-
1-510	Temporary Utilities	14,888.43	-	14,888.43	2,235.50	3,755.80	5,991.30	10,000.00	15,991.30	(1,102.87)
1-580	Project Identification	167.20	-	167.20	60.75	112.00	172.75	500.00	672.75	(505.55)
1-710	Final Cleaning	41,098.15	-	41,098.15	-	-	-	-	41,098.15	-
DIVISION 1 TOTALS		138,577.36	-	138,577.36	2,296.25	43,363.14	45,665.39	53,500.00	93,165.39	39,411.97
SITEWORK										
2-075	Concrete Removal	-	720.00	720.00	-	-	-	-	-	720.00
2-140	Dewatering	99,475.83	-	99,475.83	60,343.47	44,795.21	105,138.68	-	105,138.68	(5,662.85)
2-220	Excavate & Backfill	140,939.07	3,710.00	144,649.07	60,313.35	93,928.77	154,242.12	-	154,242.12	(9,593.05)
2-510	Asphalt Paving	99,003.02	-	99,003.02	72,076.53	27,001.16	99,077.69	-	99,077.69	(74.67)
2-520	Cement Paving	6,980.60	-	6,980.60	4,826.56	2,608.51	7,435.07	-	7,435.07	(454.47)
2-900	Landscaping	3,250.00	-	3,250.00	8,850.00	-	8,850.00	-	8,850.00	(5,600.00)
DIVISION 2 TOTALS		349,648.52	4,430.00	354,078.52	206,409.91	168,333.65	374,743.66	-	374,743.66	(20,665.04)
CONCRETE										
3-110	Structural Formwork	20,886.12	480.00	21,466.12	2,259.60	13,294.66	15,554.26	-	15,554.26	5,911.86
3-130	Permanent Forms	3,010.85	-	3,010.85	682.88	1,744.84	2,427.72	-	2,427.72	583.13

Forecast helps your financial reporting process by putting current information in front of project managers in a form they prefer, enabling them to predict the cost-at-completion for their jobs.

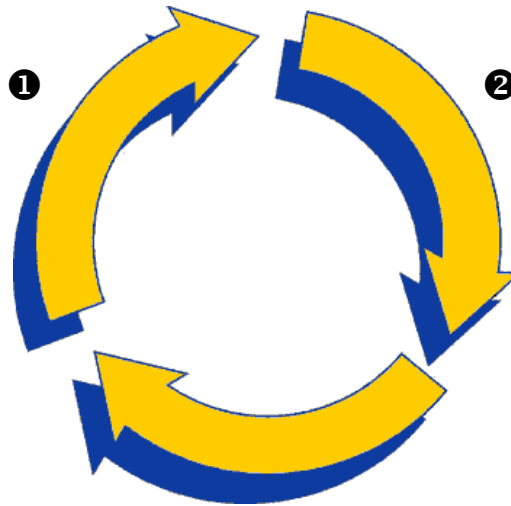
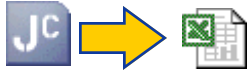
Excel-Based: Using a familiar tool (Excel) to carry out forecasting tasks can help you accomplish more in less time, with greater ease and with a higher degree of accuracy. While working with the forecast workbook, project managers can record values that are used in combination with the values taken from Job Cost to produce an analysis of the job. As values are changed, formulas and totals recalculate allowing the project manager to instantly see results.

Distributed: There's no need for project managers to have direct access to Timberline Job Cost. Forecast can distribute forecast workbooks to project managers who are either in your office or at a remote location via email.

Connected: Once project managers have completed their forecasting tasks, Forecast can put information back into Timberline for further reporting and analysis.

Forecasting Workflow using Event 1 Forecast

1 Forecast retrieves current values from Timberline Job Cost and creates or updates the forecast workbook.



2 Project manager completes the forecasting process using Microsoft Excel.



3 Forecast places results in Timberline Job Cost for further analysis and reporting.

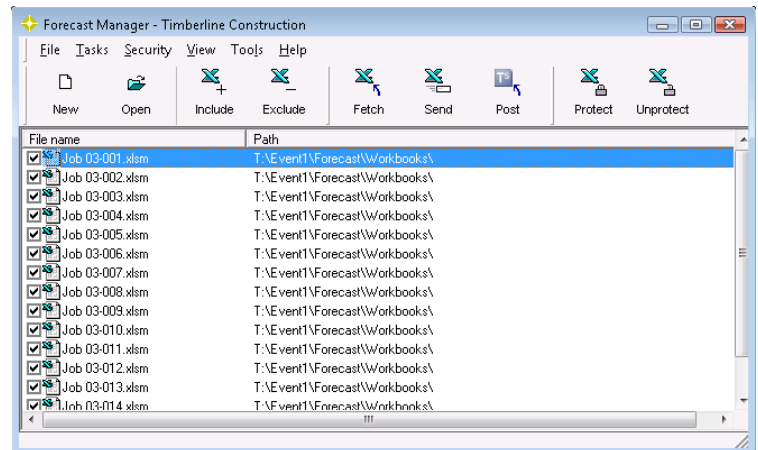


Features

Distributed	Forecast workbooks can be sent out and used on any workstation that has Microsoft Excel installed. No connection to Timberline is required while the project manager works with the data.
Interactive	As values are changed in the workbook, formula columns and totals recalculate in real-time.
Security	Only specific workbook columns are unlocked and all others are locked. This protects the integrity of the report information that was retrieved from Timberline Job Cost.
Posting	Data that is collected or computed on the forecast worksheet can be written back to specified fields in the Timberline Job Cost database for further reporting.
Batch Operation	The Forecast Manager application allows for updating and posting of multiple selected forecast workbooks at one time.

Forecast Manager

Included with Forecast, this application allows you to manage multiple forecast workbooks. Selected workbooks can be refreshed, emailed and posted to Timberline in a single process.



Online Presentation

Contact us to attend a live online presentation and see how this Event 1 Forecast can address your needs.

System Requirements

Operating System: Microsoft Windows | Microsoft Excel | Sage Timberline Office — Job Cost | Sage Timberline Office — ODBC Driver | All other system requirements as defined by Timberline



3305 Main Street
Suite 303
Vancouver, Washington 98663
(360) 567-3750 / fax (360) 567-3756
Email: sales@event1software.com
Website: www.event1software.com