

EVENT 1 INTEGRATOR INSTALLATION GUIDE

Table of Contents

- SYSTEM REQUIREMENTS 3**
- System Requirements - Overview 3
- Timberline Software 4
 - Supported Timberline Versions..... 4
 - Timberline Workstation Setup..... 5
 - Confirming Timberline Setup and Data Access 5
 - Timberline ODBC Driver 5
- Meridian Project Systems Software 6
 - Supported Prolog Manager Versions..... 6
 - Prolog Workstation Setup 6
 - Confirming Prolog Setup and Data Access 6
 - Meridian Application Integration SDK 7
- SQL Server 8
- INSTALLATION..... 9**
- Preparation 9
- Instructions..... 10
 - General 10
 - Windows 95..... 10
 - Windows 98, ME & NT **Error! Bookmark not defined.**
 - Windows 2000 & XP 10
- CITRIX ENVIRONMENT..... 11**

System Requirements

System Requirements - Overview

Required Software Applications

- Timberline Extended version 8.x or 9.x, including Accounts Payable, Job Cost, and ODBC
- Prolog Manager version 6.5x or 7.x
- Prolog Manager Accounting Integration SDK
- Microsoft Internet Explorer 5 or higher

Internet Explorer is not required as a Web browser, but the IE system files must be present in order to install Microsoft Data Access Components (MDAC) (as required by Prolog Manager)

Supported Workstation Operating Systems

- Windows 2000, XP, 2003
- Pentium 1 GHz or higher
- 256 MB memory or more for Windows NT Workstation/2000 Professional
- Hard disk with minimum of 300MB available space
- VGA Monitor (SVGA 17" color monitor recommended) with minimum screen resolution of 800x600
- Mouse or other pointing device
- If networked, network card that matches bus architecture (e.g. PCI card for PCI bus)
- Quality AC power filter with significant RF and spike protection
- Workstation unit, network card and peripherals must be on Microsoft's Windows Hardware Compatibility List.

Not Supported

- Cyrix® MII processors if using MSDE (as noted in System Requirements for Prolog Manager)

Note - Other Windows operating systems not listed in this document are not supported. Supported operating systems are based on those operating systems supported by the products of Timberline Software, Meridian Project Systems and Event 1 Software collectively.

Note - Workstation unit, network card and peripherals must be on Microsoft's Windows 95/98/2000 Professional or NT 4.0 Workstation Hardware Compatibility List

Timberline Software

Supported Timberline Versions

Versions and Editions

The following table identifies the editions and versions that are supported by Event 1 Integrator (and those that are not).

Edition and Version	Supported	Not Supported
All versions prior to 8.x		✓
Versions 8.x	✓	
Versions beyond 9.x (as of this time)		✓

To obtain more information about specific versions that are supported (but not reflected here), contact Event 1 Software or your authorized Event 1 reseller.

Required Applications

The Timberline Cost Accounting collection is made up of many applications, not all of which may be purchased by every Timberline user. The specific Timberline products that must be purchased and installed in order to utilize Event 1 Integrator are listed here-

- Accounts Payable
- Job Cost
- ODBC

Timberline Workstation Setup

Workstation must be configured to run Timberline

Any workstation that will be used to run Integrator must also be configured to run the Timberline Cost Accounting software. The following information describes how this is performed in each of the following environments.

Stand-alone	Install the Timberline software onto a local hard drive of the stand-alone computer.
Network workstation	Locate the Timberline application folder on the network the subfolder named Wininst. Execute the INSTALL.EXE program located in that folder.
Citrix Metaframe	Login to the Citrix Server. Locate the Timberline application folder on the network the subfolder named Wininst. Execute the INSTALL.EXE program located in that folder. This will complete the Timberline workstation setup for the Citrix profile. In this case, no setup tasks are completed on the local workstation's hard drive.

For more information about installation of Timberline Software or use of the Timberline Workstation Setup program, consult your Timberline documentation, contact your Timberline Certified Consultant or contact your Timberline support representative.

Confirming Timberline Setup and Data Access

Confirming Software Setup

You can confirm that workstations have been setup to run Timberline by starting Timberline from **<Start> / Programs / Timberline Applications / TS-Main**.

Confirming Data Access

You should confirm that Timberline databases you intend to utilize with Integrator can be accessed.

- Open Timberline Accounts Payable and select **Setup / Vendors**.
- Open Timberline Job Cost and select **Setup / Jobs**.

Timberline ODBC Driver

The Timberline ODBC Driver must be installed

The Timberline **ODBC** Driver must be installed on each workstation that you intend to run Integrator on. The Timberline **ODBC** Driver can be installed as part of the Timberline software installation and as part of the Timberline Workstation Setup process.

The Timberline ODBC Driver is a product that must be purchased from Timberline or your Timberline Solution Provider. If you have not purchased the Timberline **ODBC** Driver, contact Timberline Software or your Timberline Solution Provider.

Note - If you have purchased and installed the Timberline Billing application, the Timberline ODBC Driver is automatically installed. This will be a limited license if you have not purchased the Timberline **ODBC** Driver in addition. This limited license is not sufficient to use Integrator.

Meridian Project Systems Software

Supported Prolog Manager Versions

Versions

The following table identifies the versions of Prolog Manager that are supported by Event 1 Integrator (and those that are not).

Version	Supported	Not Supported
Prolog Manager 5.x (and prior)		✓
Prolog Manager 6.0		✓
Prolog Manager 6.50	✓	
Prolog Manager 6.55	✓	
Prolog Manager 6.56	✓	
Prolog Manager 7.0	✓	
Prolog Manager 7.2	✓	
Project Talk, all versions		✓
Project Web-site, all versions		✓

To obtain more information about specific versions that are supported (but not reflected here), contact Event 1 Software or your authorized Event 1 reseller.

Prolog Workstation Setup

Workstation must be configured to run Prolog Manager

Any workstation that will be used to run Integrator must also be configured to run the Prolog Manager software. Consult your Prolog Manager installation documentation, your Meridian solution provider, or Meridian Project Systems for more information about configuring workstations to run Prolog Manager.

Confirming Prolog Setup and Data Access

Confirming Software Setup

You should confirm that each workstation that is to run Integrator can successfully run the Prolog Manager application. You can start the Prolog Manager software by selecting <Start> Program Files / Meridian / Prolog Manager X / Prolog Manager X (where X is "6" or "7")

Confirming Data Access

You should confirm that each Prolog Manager database that you intend to use with Event 1 Integrator may be accessed from Prolog Manager on the workstations that will be running Event 1 Integrator.

Meridian Application Integration SDK

What is an SDK?

SDK is an acronym that stands for Software Developer's Kit. The Meridian Application Integration SDK (AI SDK for short) provides the connectivity necessary for Event 1 Integrator to interact with Prolog Manager databases and adhere to business rules and data relationships set forth by Meridian.

Obtaining the AI SDK

The AI SDK is available to licensed users of Prolog Manager from the following sources at no cost.

- Meridian Web-site: www.mps.com
- Prolog Manager software installation CD

SQL Server

For SQL Server 2000 or 2003

To use Integrator with a connection to SQL Server 2000, the SQL Server 2000 Client Tools software must be installed on the workstation will run Integrator. The SQL Server 2000 Client Tools can be installed from the SQL Server installation CD using the same setup program that is used to install the SQL Server software. In a Windows 9x environment, the setup program will detect that you are not in an environment that can support SQL Server an so your only option will be to install the Client Tools. In a Windows NT or 2000 environment, you must specify that you wish to install Client Tools and not the SQL Server software.

The Client Tools provides the SQL DMO (SQL Database Management Objects) library that Integrator needs to administer its own database.

Installation

Preparation

Checklist

Use the following check-list to confirm that you have completed all of the necessary preparation before installing your Integrator software.


- Review the System Requirements section of this documentation (including the detailed information about Timberline and Meridian)
- Complete any additional workstation setup relative to Timberline or Meridian.
- Close all other programs that are running.
- Shut-down MSDE (if running on the local workstation)

MSDE

The Microsoft Desktop Engine (MSDE) is the component used by both Prolog Manager and Event 1 Integrator when connecting with MS-SQL databases when there is no SQL Server.

Shutting down MSDE

The local MSDE database engine cannot be running when you are installing Event 1 Integrator. If you attempt to install Integrator while MSDE is running, you may be notified that certain system files need to be upgraded and then you must reboot. Upon re-entry into the Integrator setup, you are informed of the same condition and you will appear to be in an endless Update/Re-boot cycle.

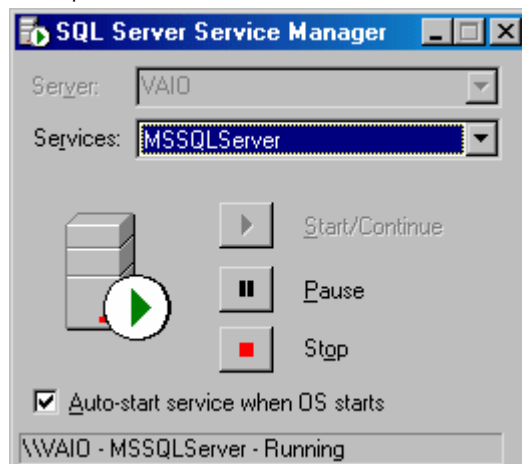
The MSDE engine can be stopped by using the SQL Service Manager utility (sqlmangr.exe). If you see the SQL Service Manager icon () in the system tray at the bottom right corner of your screen, the SQL Service Manager is already running. If this is the case, you can open the SQL Service Manager window by double-clicking on the icon.



System Tray:

If the SQL Service Manager is not already running, you can locate the sqlmangr.exe file (normally located in MSSQL\Binn) and run it.

Once the SQL Service Manager window is open, you can shut-down each service (normally 3) for the local desktop server.



- Confirm that the Server selection identifies the computer name of the local workstation.
- Select each service (normally 3) and click the Stop button.

Instructions




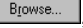

General

- **Close Running Programs.**
Close programs that are currently running. While installing Event 1 applications, it is possible that some of the files may already reside on your system but may be an older version. If this is the case, the installation program will not be able to update the files if they are being used. Closing all programs before starting an installation process will help to avoid this problem.
- **Internet Download**
If you have obtained your software by downloading it from the Internet, you will have an executable file with a name like "SetupIntegrator2x.Exe". This is a self-extracting archive that contains all of the files needed to run the setup program. This is not the software itself and also is not the installation program. When you launch this program you will be prompted to select the folder that the files should be extracted into. This should be an empty folder. Make note of the folder name that is used so that you can launch the setup program in that folder later.
- **Updates**
If you are installing an update to existing software it is not necessary to un-install the existing software first unless specifically instructed to do so.

Windows 95

The setup program for Event 1 applications does not support this platform. If you require the ability to install an Event 1 application on this platform you may request a custom installation package from Event 1 for a fee.

Windows 2000, XP & 2003

1. If you have downloaded your software from the Internet you should already have extracted the setup program into an empty folder.
2. Click on  ► Settings ► Control Panel
3. Double-Click on the icon entitled "Add/Remove Programs"
4. Click on the "Add New Programs" icon that appears on the tool-bar on the left.
5. Click on .
6. A wizard will start entitled "Install Program from Floppy Disk or CD-ROM"
7. If you are installing your software from CD, insert the CD at this time.
8. Click .
9. If you are installing from CD, the wizard will identify the Setup.exe program on the CD in your CD-ROM drive. If you downloaded your software from the Internet, click , navigate to the folder containing the extracted setup program and select "Setup.exe".
10. Click .
11. The Event 1 Setup Wizard will start and guide you through the remaining steps of the installation process.

Citrix Environment

An important distinction to make is the difference between a computer that is used to store program files (the computer on which executables are installed) and the computer that will run programs. The program files of a shared network application are typically installed on a file server meaning that the drive on which the physical files are stored is a file server drive. When the programs are run however, the workstation "copies" the program executables across the network (from the file server) into the workstation's memory and the program is executed on the workstation.

In a Citrix environment the method of executing shared network application differs in that the Citrix server acts like a workstation by executing the programs in the same way described above. The workstation has "control" of the Citrix session in which the programs are running and the workstation only needs to communicate keyboard strokes and mouse events to the Citrix server and receive screen updates back. No program execution or processing is performed by the workstation itself.

A network workstation is typically capable of executing programs itself as well as opening and controlling a Citrix session. Integrator requires that both the Timberline software and the Prolog Manager software be configured to run on the computer that will be running Integrator. The following table reflects the configurations that are and aren't supported.

Timberline Cost Accounting (configured to run on ...)	Prolog Manager (configured to run on ...)	Supported
Workstation	Workstation	Yes
Workstation	Citrix	No
Citrix	Workstation	No
Citrix	Citrix	Yes

The following illustration reflects a workstation that has an open Citrix session.

