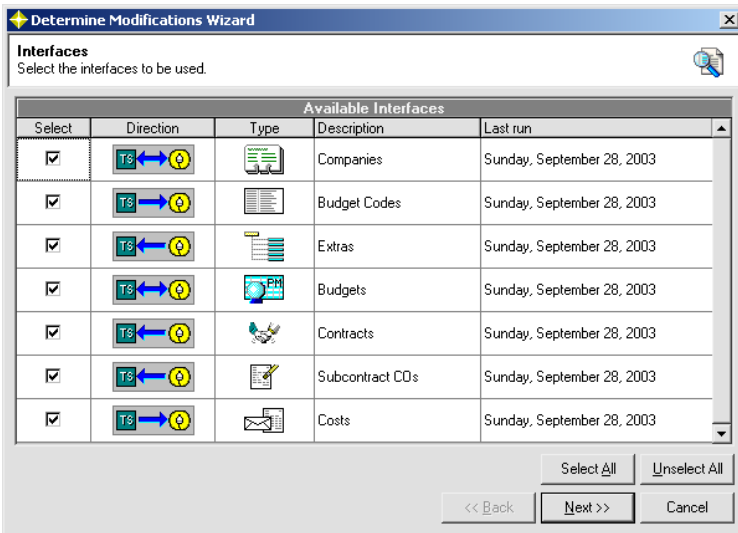




"Integrator is allowing us to move data in ways that we never thought possible. From importing the Budget over to Prolog to seeing cost flow across from Timberline, it has truly increased our efficiency. This product is exactly what we have been asking for from other vendors for years. Finally, someone got it right."

- Jason Jowers, BL Harbert International LLC

Integration for Timberline Office[®] and Prolog Manager[™]



Two powerful industry standards have joined forces: Prolog Manager[™] and Timberline Office[®].

Event 1 Software introduces Event 1 Integrator, the MPS-authorized DataBridge for Timberline Office[®]. This is an application designed and built to meet your financial data integration needs. Using Integrator, you can connect this powerful and popular project control system to the leading construction accounting system. Integrator eliminates dual entry and worry. Seamlessly integrating your Timberline Office financial information with Prolog Manager's robust cost control module saves time and enables complete cost-to-date reporting. Integrator was developed by Event 1 Software, Inc., a Timberline Authorized Developer in partnership with select Meridian Project Systems and Timberline customers.

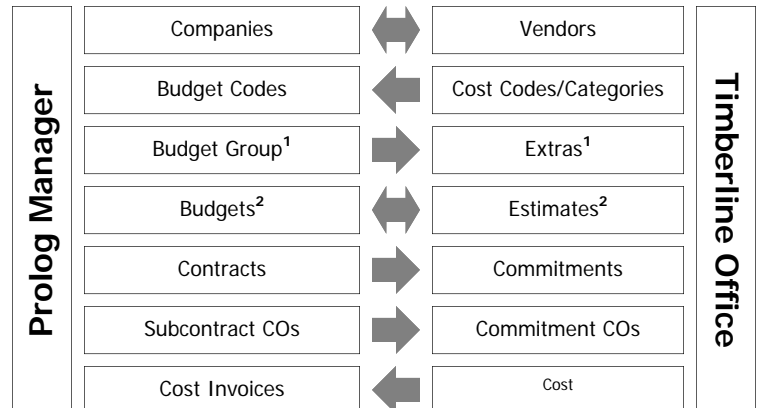
Benefits:

- ◆ Reduce double-entry of data
- ◆ Increase accuracy
- ◆ Provide timely up-to-date job costs to each project manager
- ◆ Reduce the time required to manage costs on a project
- ◆ Eliminate overhead by reducing resources needed for entering cost data
- ◆ Send the right information to the right people at the right time
- ◆ Increase your return on investment in both Prolog Manager and Timberline Office

Summary of Features:

- ◆ Flexible Setup
- ◆ Control over exchanged data
- ◆ Optional unattended operation

Integrator exchanges the following information:



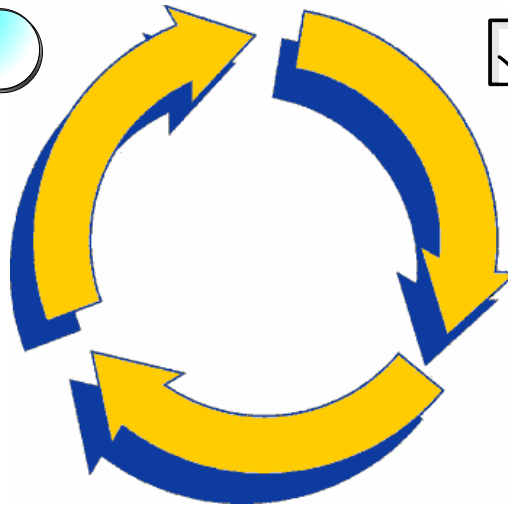
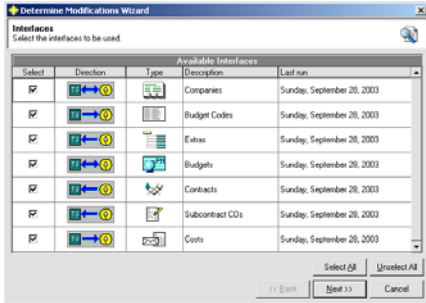
¹ Available as an add-on ² Standard license allows Timberline to Prolog only

Integrator Workflow

Integrator gives you the option of having as much or as little interaction with the integration process as you prefer. Workflow consists of three steps and at your option you can collapse these into two or even one step. Additionally, the entire integration process can be setup to run unattended.

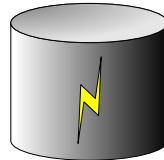
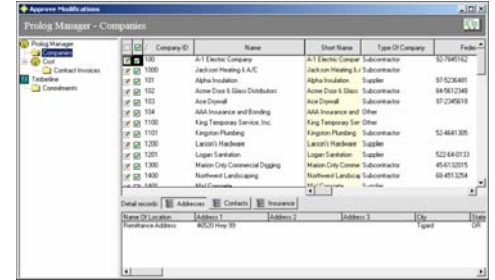
1 Determine Modifications

Integrator compares the current data found in Timberline and Prolog in order to determine a list of additions or changes that are needed.



2 Approve Modifications

Review a list of modifications on-screen and selectively approve, postpone or discard them as needed.



3 Perform Modifications

Data in Timberline and Prolog is updated by adding or modifying records based on the list of approved modifications.

Features

Connectivity	Clearly one of Event 1 Software's signature traits is the ease that Event 1 products connect to Timberline or SQL databases. Integrator makes use of proven techniques and components that make connecting to your Timberline or Prolog Manager database easy. The connection to your Timberline database is made via Timberline's ODBC driver but there is no need on your part to perform any special configuration. Event 1's ODBC connectivity takes care of it for you! On the Prolog Manager end, Integrator makes use of the MPS Application Integration SDK (Software Developer Kit). The SDK allows Integrator to access your Prolog Manager database while enforcing business and database rules.
Wizard Driven	When there is a task to accomplish that may involve multiple steps Event 1's approach is to present the steps to you in a clear and easy-to-understand wizard.
Reports	After the "Determine Modifications" and "Perform Modifications" steps of the workflow process Integrator produces a recap of the task. This provides a list of the data that was added or changed as well as any related warning messages or rejections. All reports are produced in an easy-to-navigate HTML format that can be saved retrieved and printed.
Control	Perform integration tasks for specific types of data and specific projects.

Flexible Mappings	Timberline Job Cost and Prolog Manager each provide a different set of options for defining the work breakdown structure (WBS) of a job. Integrator overcomes this by providing a "WBS Relationship Wizard" that guides you through the setup of a mapping between the two structures. Other user-defined mappings include company/vendor types, address types, contacts, contract/commitment types, contract/commitment dates, and subcontract co/commitment co dates.
Flexible Settings	The user-defined settings for each interface give you control over how and when data will be exchanged.
Substitution Tables	Substitution tables allow you to define sets of Timberline/Prolog values that can be used to translate dissimilar values. Substitution tables can be created for: <ul style="list-style-type: none"> • Company & Vendor Ids • Project & Job Numbers • Budget Codes & Cost Codes/Categories
Unattended Operation	Integration tasks can be executed via a command-line, batch file or scheduled task using the IRUN application (included).

System Requirements

Microsoft Windows Operating System | Timberline Office (JC & AP) | Timberline ODBC Driver | Prolog Manager | Prolog AI-SDK (downloadable from MPS web-site). For specific versions see the system requirements web-page for Integrator.