



"The product and the customer service provided has thus far exceeded my expectations. Office Connector should become a requirement for all serious Timberline Office users."
 – Tom Bergman, Management Resources Development

Superior Excel Integration for Sage Timberline Office



What if you could quickly produce the following results in Excel using Sage Timberline Office data?

Cash Flow Forecast				
Cash On Hand				
			Balance	
Account	CM Bank	Number	Register	Bank
First Pacific Bank (AP & AR)	First	042134526	1,047,795.05	1,125,087.88
First Pacific Bank (PR)	First - PR	042134526	-	-
			1,047,795.05	1,125,087.88
Expected Cash Change				
Changes	Potential	30 Day	10 Day	
Cash Receipts	409,861.62	406,198.35	233,310.00	
Cash Disbursements	(471,111.79)	(435,013.24)	(95,757.28)	
Payroll	(45,768.00)	(45,768.00)	(22,884.00)	
Net Change	(107,018.17)	(74,582.89)	174,668.72	
	Potential	30 Day	10 Day	
Expected Cash Position	\$1,018,069.71	\$973,212.16	\$1,222,463.77	
Detail				
Accounts Receivable - Open Balances				
Customer	ID	Amount	30 Day	10 Day
Grocer's Association	GA	233,160.00	233,160.00	233,160.00
Grocer's Association	GA	2,937.87	-	-

✓ Work-In-Process

✓ Financial Statements

✓ Cash Flow Statements

✓ Cost To Complete

✓ Reconciliation Reports

✓ Forms

✓ Graphs

Office Connector is an Excel Add-In that allows you to access your Sage Timberline Office data quickly and easily. The Add-In places new menu items and toolbar buttons in Excel as well as new worksheet functions that you can use inside Excel formulas.

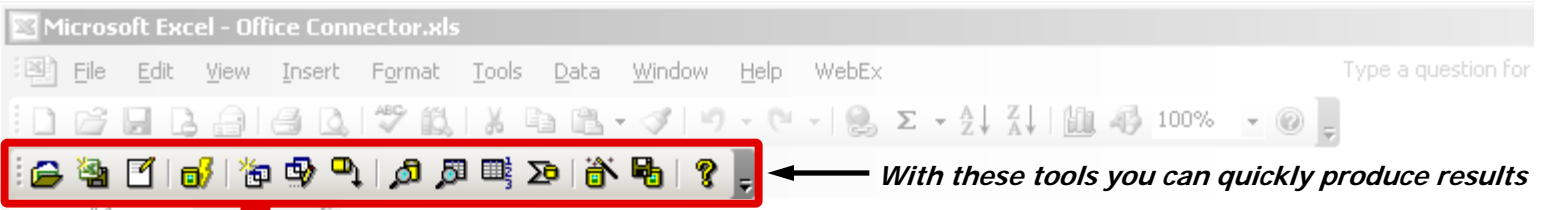
With Office Connector, you can **seamlessly** access your Sage Timberline Office data from Excel. Office Connector automatically creates a connection to your database using Sage Timberline Office's ODBC driver without the need for you to configure data sources or create queries.

Office Connector allows you to embed dynamic queries that retrieve data from your Sage Timberline Office database into your Excel workbooks. Data can be refreshed at any time with the click of a button, or you can sever the link and create a static snapshot of the values that can be sent to other Excel users.

Create **concise** and **dynamic** links to data in any field on any record in the Sage Timberline Office database using powerful Office Connector functions. With these functions, you can lookup field values from specific records, sum a given field in the database while applying criteria and much more!

Start developing entire spreadsheet solutions that work with your Sage Timberline Office data today!

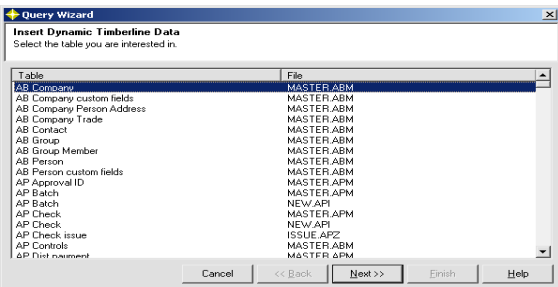
Office Connector Tools



Icon	Tool Name	Description
	Save As Values	Saves a copy of the current workbook without any Office Connector queries or worksheet functions included. The saved workbook can be used by any user of Excel without needing to have Office Connector or Sage Timberline Office installed.
	Open Timberline Office Data Folder	Allows the selection of the Sage Timberline Office data folder that will be associated with the current workbook.
	Refresh Timberline Office Data	Refreshes all Office Connector queries and worksheet functions by re-querying the Sage Timberline Office data.
	Insert Query	Inserts a dynamic query into the worksheet where rows are automatically inserted or deleted based on the records returned by the query.
	Import Timberline Office Data	Imports a table of Sage Timberline Office data into the worksheet.
	Lookup Field Value	Displays a wizard that results in the creation of an Office Connector TSLookup function in the current cell. A TSLookup function can retrieve a value from a single field on any record in the Sage Timberline Office database.
	Find Record	Displays a wizard that results in the creation of an Office Connector TSFind function in the current cell. A TSFind function can retrieve a value from a single field on a record specified by search criteria.
	Count Records	Displays a wizard that results in the creation of an Office Connector TSCount function in the current cell. A TSCount function can count the number of records that meet specified criteria.
	Sum Fields	Displays a wizard that results in the creation of an Office Connector TSSum function in the current cell. A TSSum function can return the sum of a single field in a set of records that meet specified criteria.
	Display Help	Displays the Office Connector online help, which documents function syntax including examples.

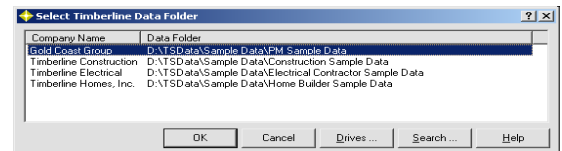
Wizard Driven

Office Connector's wizards make it easy to accomplish the tasks that you want.



Easy Connectivity

Office Connector allows Excel to Connect with Sage Timberline Office data and without the need for you to setup ODBC data sources or define queries!



System Requirements

Operating System: Microsoft Windows 2000, XP or 2003 | **Microsoft Excel:** Microsoft Excel 2000, 2002, XP or 2003 | **Timberline:** Sage Timberline Office 8.x or 9.x | Sage Timberline Office ODBC Driver | All other system requirements as defined by Sage Timberline Office

Online Presentation

Contact us to attend a live online presentation and see how this Event 1 Office Connector can address your needs.



(360) 567-3750 / fax (360) 567-3756
 Email: sales@event1software.com
 Website: www.event1software.com